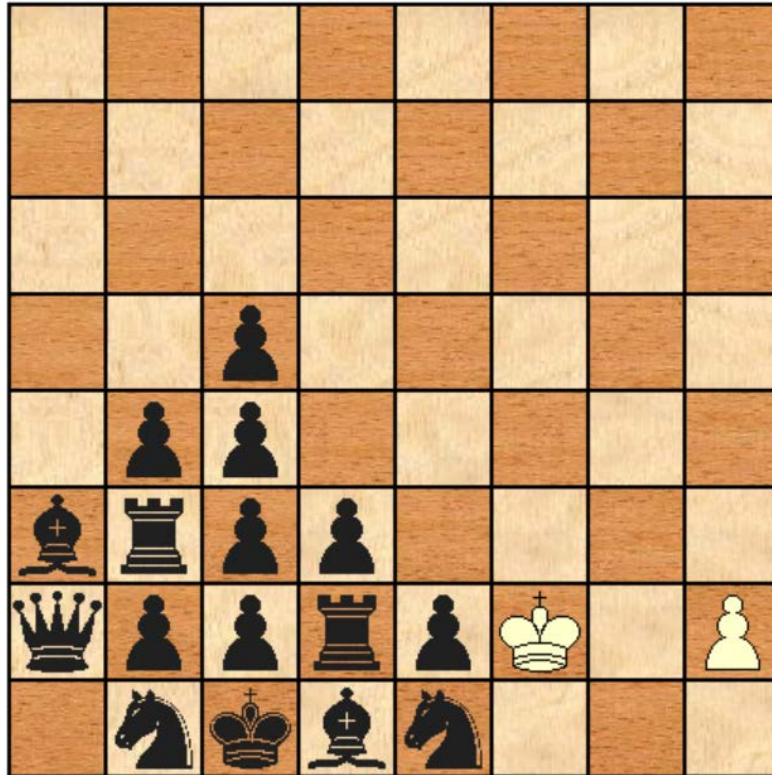


## CHESSE T' MINIT puzzle – December 2017

This position was found on the internet (author unknown). Black has their full complement of pieces, and white has only a king and pawn, but with the right moves can win. The challenge is to find the way to win. The first 2 moves are crucial



Solution: 1 Kxe1 is necessary or otherwise Black's knight can move and a new queen formed. After this black can only shuffle the queen back and forward, leaving white to (eventually) checkmate on c3. If white hurries and plays 2. h4 (after 1 ... Qa1) the position is at best a draw for white, but after 2. h3! Qa2 3. h4 Qa1 4. h5 Qa2 5. h6 Qa1 6. h7 Qa2 7. h8=N! Qa1 a possible winning series of moves is 8 Ng6 Qa2 9. Ne5 Qa1 10. Nd7 Qa2 11. Nxc5 Qa1 12. Nb7 Qa2 13. Na5 Qa1 14 Nxc4 Qa2 15. Na5 Qa1 16 Nxb3 checkmate.