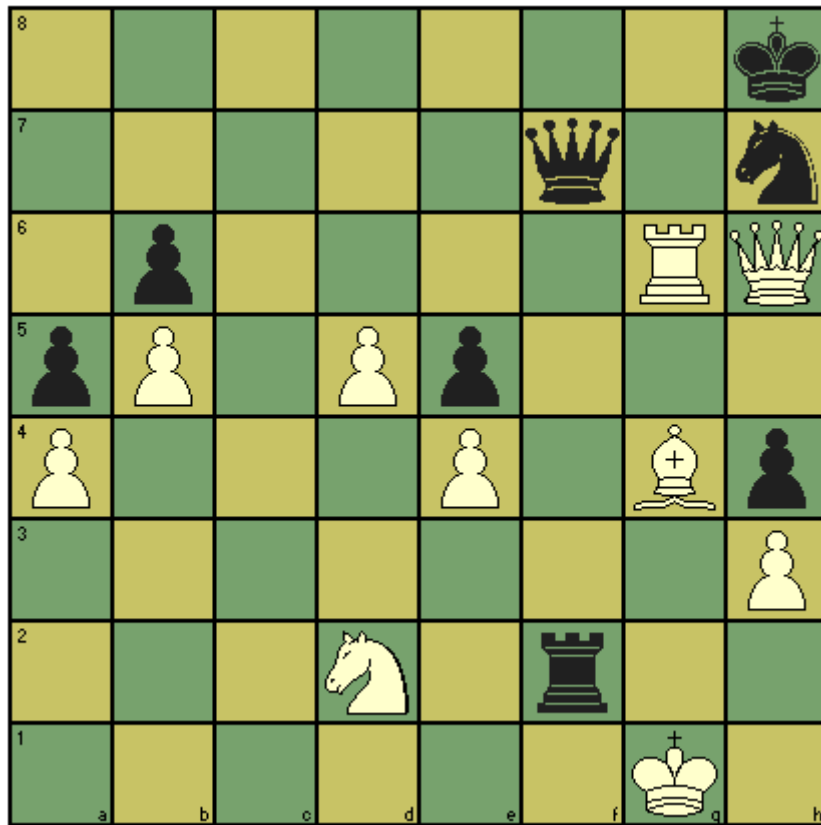


CHESS T' MINIT puzzle – December 2015

This game features Bullwinkle player Tyson Walker as Black in the 2015 Oceania Zonal tournament. White has a crushing position and decided to play Rg7 with checkmate looming at h7. How did black respond?



Solution. 1. Rg7?? is a blunder and Tyson played 1 ... Rf1! 2. Nxf1 Qxf1! Kxf1 with a draw by stalemate. (1 ... Rg2 followed by Qf1 would also suffice to draw).