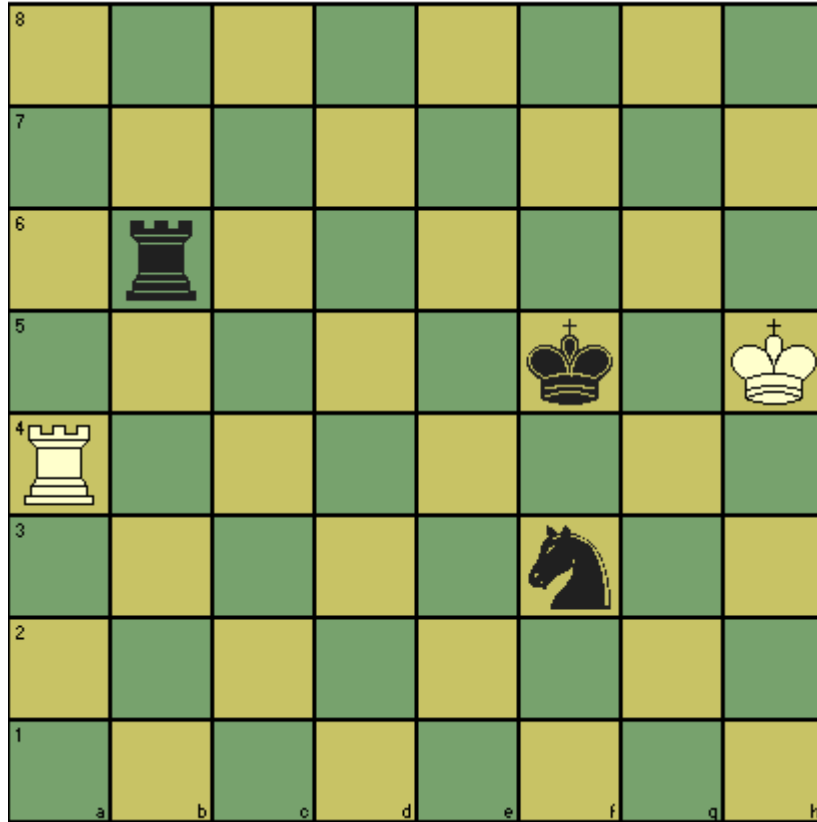


CHESST' MINIT puzzle – October 2013

This position arose in the first round of the FIDE World Cup tournament played in Tromsø. While many Rook and Knight versus Rook positions are known draws, this position can be resolved quickly – white to move and draw. This position was featured in Susan Polger's excellent blog.



Solution:

1. Rf4+ Kxf4 is stalemate.