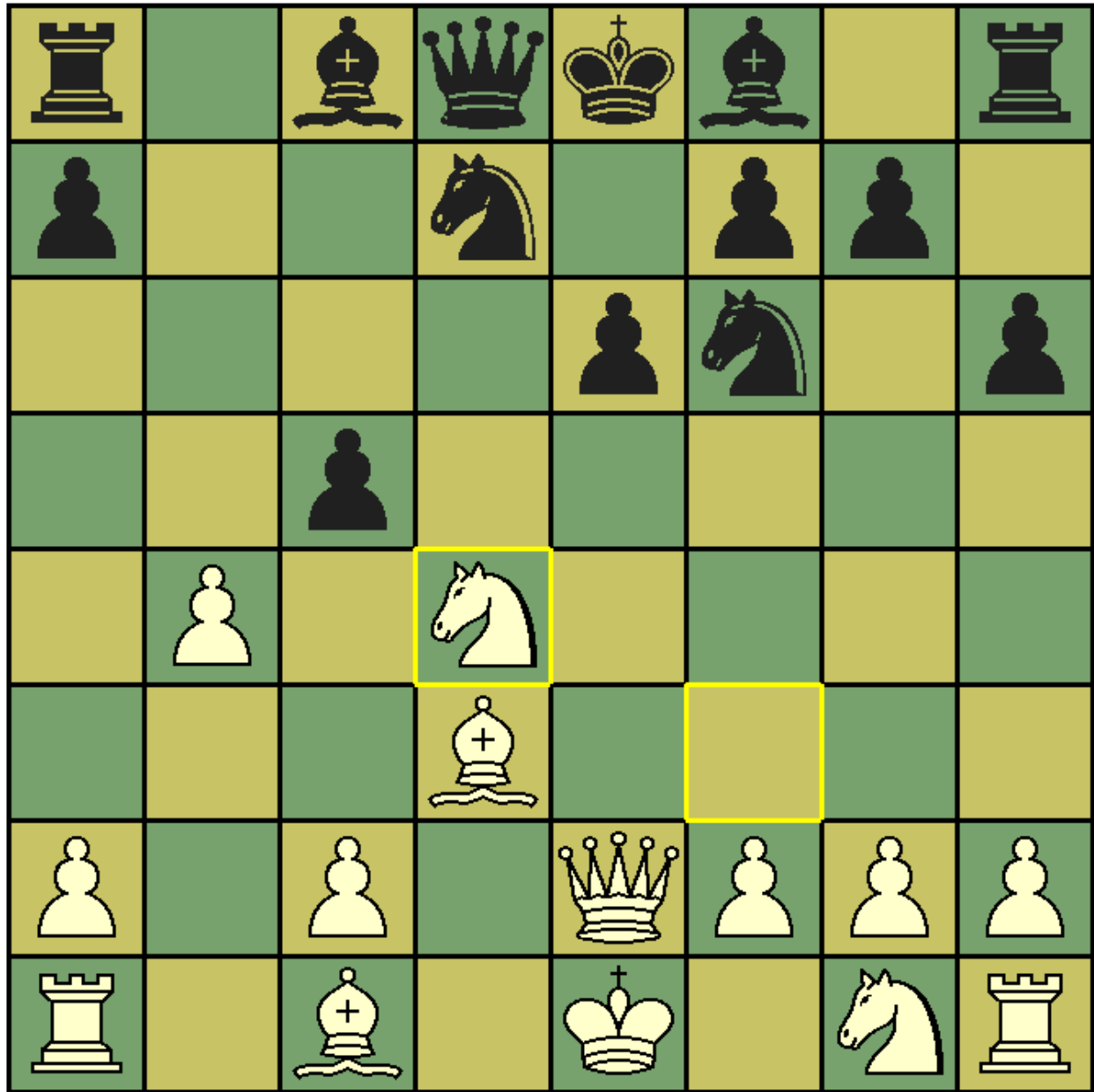


CHESS puzzle – August 2012

This month's problem is a famous example of an opening blunder (the opening is the caro-kan defence) played between Bela Perenyi and Laszlo Eperjesi in 1974. White to play and win – the follow up to the winning move is the key to the puzzle.



1. Nc6 is the winning move 1... Qc7, 2. Qxe6#! fxe6 3. Bg6 is checkmate.