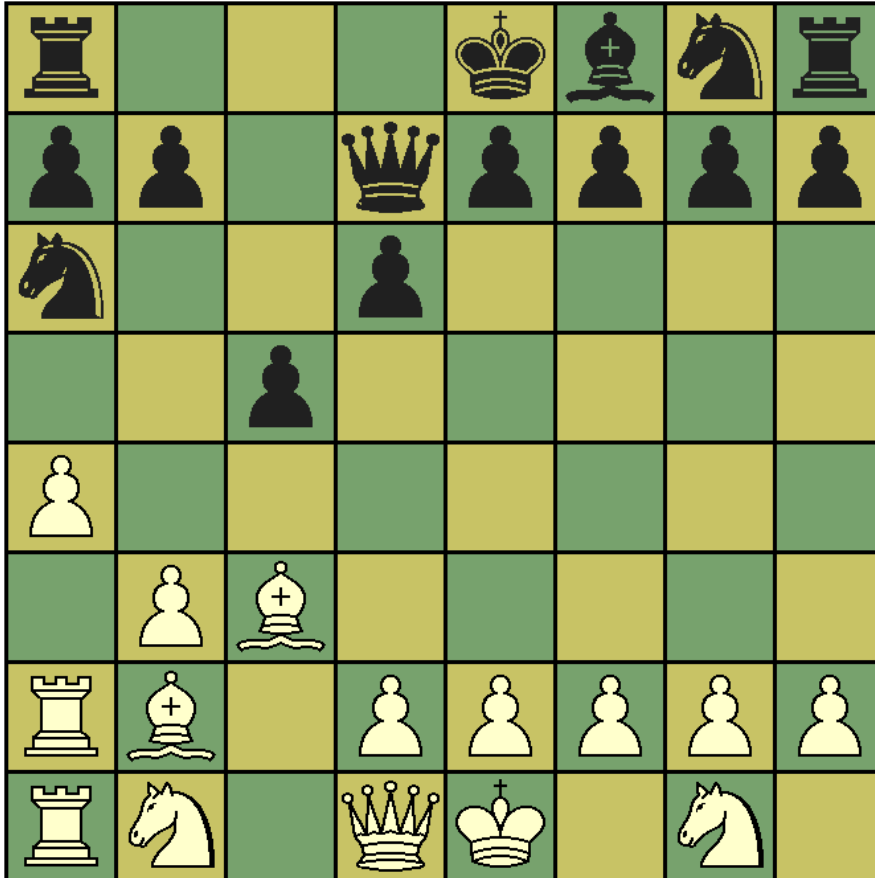


CHES T' MINIT puzzle – April 2012

This month's problem is based on a fascinating example of retrograde analysis (author unknown). The question is, "In this position it is black to move – can he castle?"



Answer: Surprisingly, the answer is definitely not.

* white has two black squared bishops so one must be a promoted pawn. Given the pawn structures and the fact that black has only one piece captured (white squared bishop), the only possibility is that the capture took place on d7. At this point, either the black king had moved (and castling would subsequently be impossible), or the king moves to escape the check (capture by another piece is not possible), again rendering castling impossible.